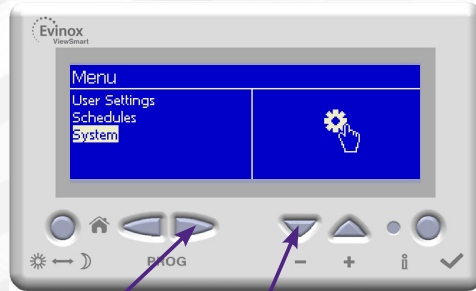


System Settings

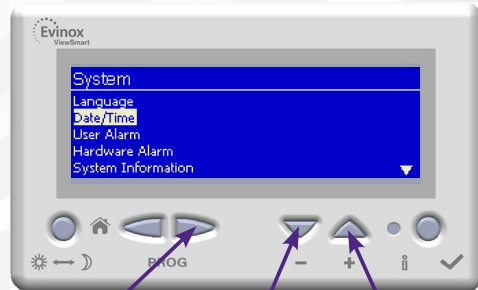
Here you can view general system settings such as the date and time, language and system information.



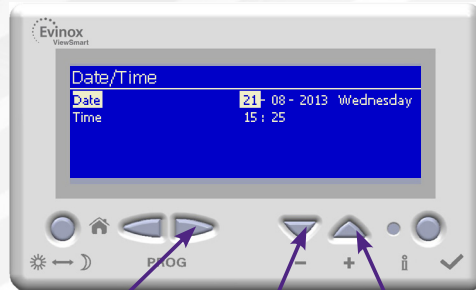
1. From the Home Screen - Press the Home button to view the Main Menu.



2. Scroll down using the - button and select "System" using the Right Hand Scroll button.



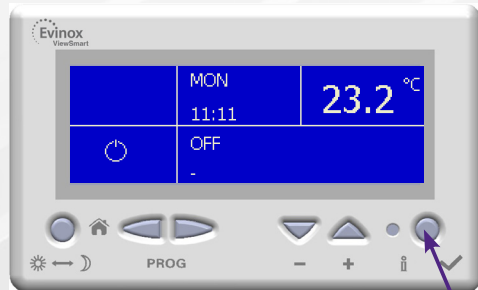
3. Scroll up and down using the + & - buttons and select the required item using the Right Hand Scroll Button to enter the next screen.



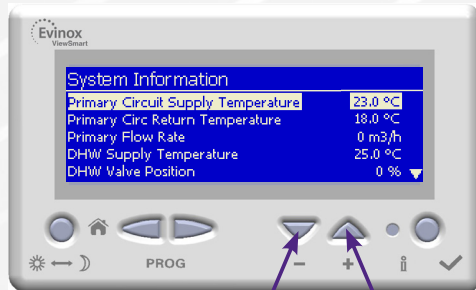
4. Here is an example showing the Date / Time Screen, where you can make changes using the Right Hand Scroll button and the + & - buttons. **Press the Enter button, while each value is highlighted, to save each change.**

System Information

Here you can view information about the heating and hot water system.



1. From the Home Screen - Press the Enter button to view the "System Information" screen.



2. Scroll up and down using the + & - buttons to view the system information.

Room Controller User Guide - For ModuSat FS & ModuSat TP with Buffer Tank

You can find information over the following pages about how to operate the ViewSmart Room Controller in your home.

Description of Operating Modes

Comfort (ON)
Comfort mode should be set to the room temperature required when the home is occupied. (Recommended temperature set point is 21°C)

ECO

ECO mode should be set to the minimum room temperature required when the home is not occupied. (Recommended temperature set point is 15°C)

DHW Comfort (Domestic Hot Water)

DHW Comfort mode should be set to the temperature required for the tank when the home is occupied.

DHW ECO (Domestic Hot Water)

DHW ECO mode should be set to the minimum hot water temperature required when the home is not occupied.

Anti-freeze

Anti-freeze is factory set at 10°C. This mode should be selected to provide frost protection when the property is unoccupied for long periods. (Note: Anti-freeze disables the heating mode unless the temperature falls below the set 10°C)

OFF

This mode turns off the Heating & Hot Water. (Please be advised when OFF mode is selected this provides no protection against frost)

AUTO

The Auto mode must be applied to activate any Time Schedules that have been created. (See Time Schedule Programming Page 3 for further information)

Quick-set the heating from the Home Screen

From the Home screen you can use the Plus & Minus buttons to increase or decrease the required room temperature. If you increase the temperature above the current room temperature this will activate the heating. If you decrease the temperature below the current room temperature and the heating is on it will be turned off. (Not applicable when the unit is in OFF mode)

Home Screen & Buttons



- Home Button**
(Also press to access main menu from Home screen)
- Scroll Buttons**
(For Menu or Item in Page)
- Plus / Minus Buttons**
(Use to Change Values & Scroll through menus)
- Enter Button**
(Use to Save Settings. Also a Shortcut to Info Menu from Home Screen)

Home screen information shown clockwise -

- MON** Day and Time
- 11:11** Day and Time
- 23.2 °C** Current Room Temperature
- OFF** Current Mode
- Alarms** (Any Alarms Will be Shown Here and the Red LED light will be ON)

Key to Symbols

The following symbols are displayed in the bottom left hand corner of the home screen and Indicate the current system status -

- Circle Symbol - System Idle**
- Radiator Symbol - System in Heating Production**
- Tap Symbol - System in Hot Water Production**

The following symbols are displayed next to the date and time on the home screen

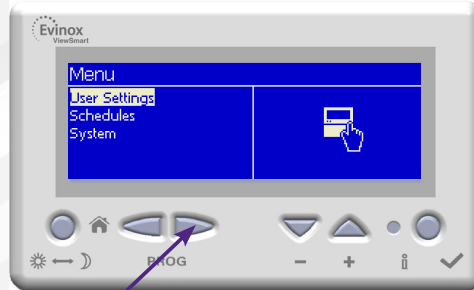
- Clock Symbol - This will be displayed when a Time Schedule is activated**
- Holiday symbol - This will be displayed when a Holiday Schedule is activated**

Temperature Setting

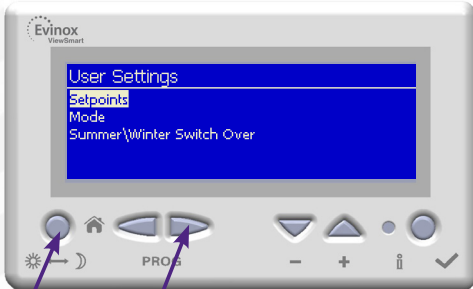
This operation allows the user to set the temperature set point for Comfort, ECO, Anti-freeze, OFF, DHW Comfort and DHW ECO, which can follow the daily or weekly set time schedule, or be set to run 24/7..



1. From the Home Screen - Press the Home button to view the Main Menu.

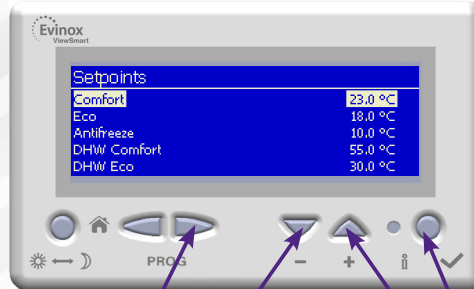


2. Select "User Settings" using the Right Hand Scroll Button.



3. Select "Set points" using the Right Hand Scroll Button.

Please note: Summer/Winter Switch Over is only applicable to Heating & Cooling models.



4. Use the + & - Buttons to scroll up and down the menu and select the Mode you wish to adjust. Use the Right Hand Scroll button to highlight the temperature and the + & - Arrows to increase or decrease the temperature setting.

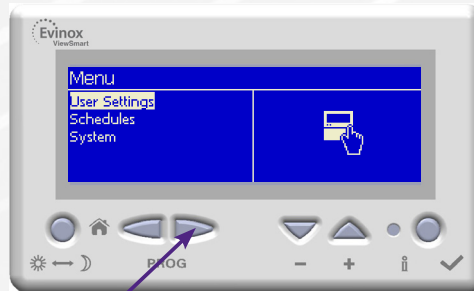
Press the Enter button, while the temperature is highlighted, to save the change. Press the Home button to return to the Home screen.

Selecting an Operating Mode

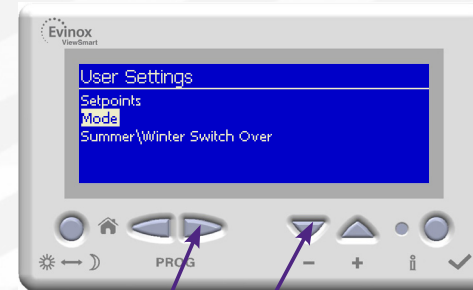
This operation allows the user to set the operating mode for the Heating & Hot Water: Comfort, OFF, Antifreeze, ECO, Auto, DHW Comfort and DHW ECO.



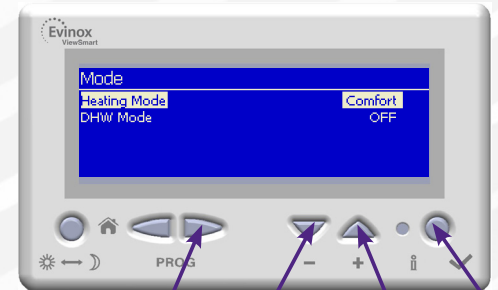
1. From the Home Screen - Press the Home button to view the Main Menu.



2. Select "User Settings" using the Right Hand Scroll Button.



3. Select "Mode" by scrolling down using the - button and press the Right Hand Scroll button to enter the Mode menu.



4. Here you can change the Mode for the Heating or Hot Water by using the Right Hand Scroll and then the + and - buttons to scroll through to the desired mode. (Note: when Comfort mode is selected the system runs 24/7 as per the setpoints).

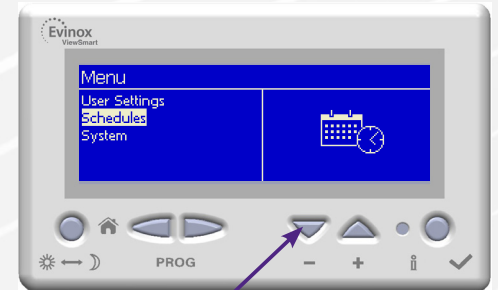
Press the Enter button, while the mode is highlighted, to save the change. Press the Home button to return to the Home screen.

Time Schedule Programming

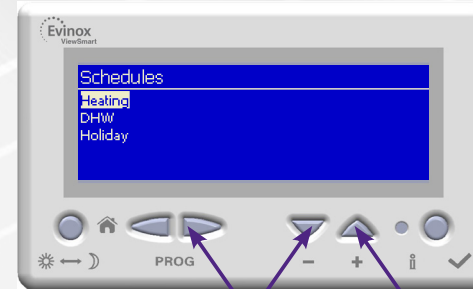
The time schedule can be set to control the Comfort, Antifreeze, ECO, OFF, Auto, DHW Comfort and DHW ECO operation of the system. Weekly, daily and weekend schedules can be set



1. From the Home Screen - Press the Home button to view the Main Menu.

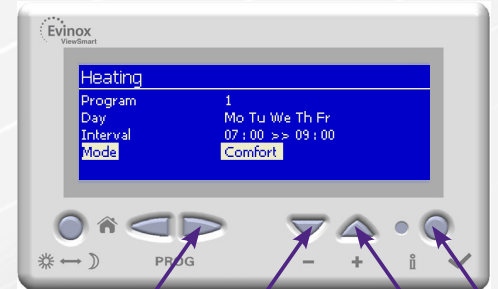


2. Select "Schedules" by scrolling down using the - button and pressing the Right Hand Scroll button to enter the menu.



3. Scroll using the + & - buttons and select the required Schedule (Heating, DHW or Holiday).

Press the Right Hand Scroll Button to enter the next screen.



4. Here you can create a schedule. Use the Right Hand Scroll Button to highlight the values and the + & - Buttons to scroll through the Days, Times and Modes. (The example above shows a schedule for the Heating to operate in Comfort Mode Mon - Fri between 7am-9am)

Press the Enter button, while each value is highlighted, to save each change. Press the Home button to return to the Home screen.

Please Note: You must select the AUTO operating mode, as shown in "Selecting Operating Modes" to activate the time schedule programme. (For example, if you have selected a Time Schedule Programme for your heating you must select "AUTO" mode for the Heating in the "Mode" screen)